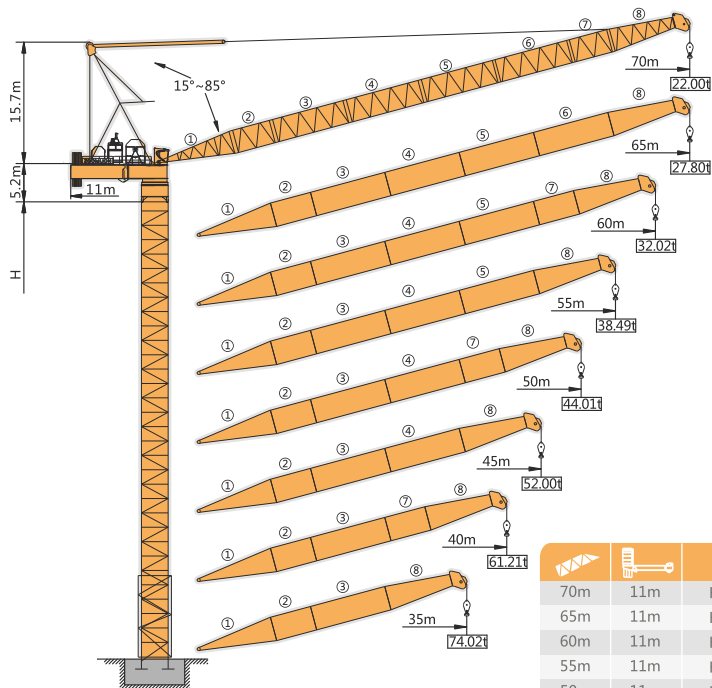





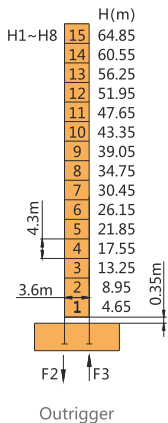
LH200-100 Luffing Jib Tow Crane



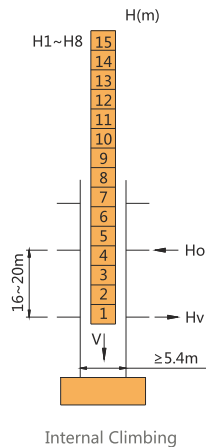
		H	 (kg)	PHZ10000	PHZ5000
70m	11m	H1	115000	11	1
65m	11m	H2	115000	11	1
60m	11m	H3	115000	11	1
55m	11m	H4	115000	11	1
50m	11m	H5	110000	11	0
45m	11m	H6	110000	11	0
40m	11m	H7	110000	11	0
35m	11m	H8	110000	11	0

LH2200-100

Masts / Reactions



Outrigger	
F2	● 894t
	■ 595t
F3	● 599t
	■ 361t
	👤 468t

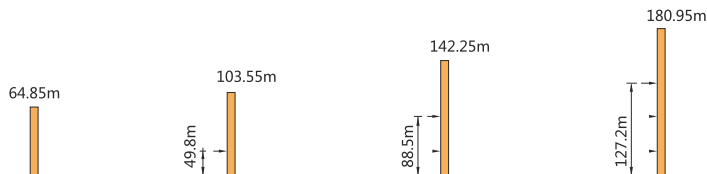


Internal climbing	
	● 136~232t
Ho	■ 52~140t
	● 104~192t
Hv	■ 16~94t
V	631t

- Reactions in service
- Reactions out of service
- 👤 Weight with max free-standing height, max jib (without counter-weight and load)
- Ⓞ Consult us

LH2200-100

Anchorage

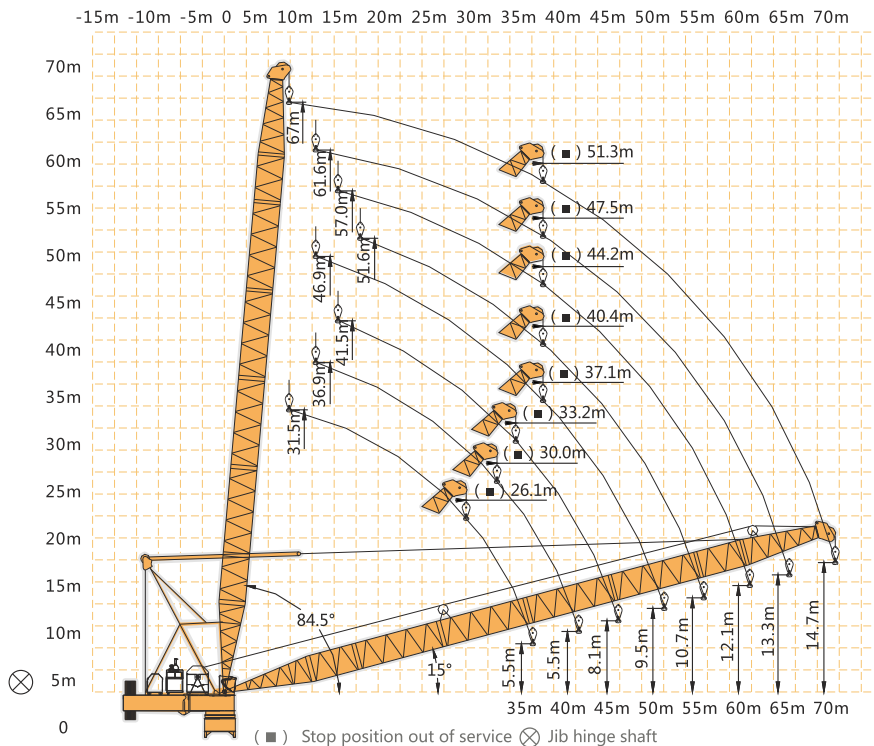


LH2200-100 Luffing Jib Tow Crane

LH2200-100

Load Diagrams






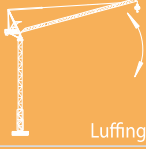

		Max Capacity m/t	15.0	20.0	25.0	30.0	35.0	40.0	45.0	50.0	55.0	60.0	65.0	70.0
70m		7.9~43.4/50.00	50.00	50.00	50.00	50.00	50.00	50.00	48.54	41.12	35.05	30.00	25.72	22.00
		7.9~27.1/85.00	85.00	85.00	85.00	79.09	65.97	55.72	47.54	40.19	34.12	29.11	24.88	21.44 (69.75)
65m		7.4~44.7/50.00	50.00	50.00	50.00	50.00	50.00	50.00	49.4	42.23	36.44	31.64	27.80 (64.80)	
		7.4~25.2/100.00	100.00	100.00	100.00	84.14	68.76	57.28	48.41	41.32	35.57	30.83	27.29 (64.52)	
60m		7.0~44.7/50.00	50.00	50.00	50.00	50.00	50.00	50.00	49.68	42.83	37.05	32.02 (60.30)		
		7.0~25.5/100.00	100.00	100.00	100.00	84.50	69.24	57.84	49.01	41.97	36.25	31.55		
55m		6.5~45.9/50.00	50.00	50.00	50.00	50.00	50.00	50.00	50.00	44.37	38.49 (55.06)			
		6.5~26.0/100.00	100.00	100.00	100.00	86.78	71.26	59.67	50.71	43.58	38.07 (54.79)			
50m		6.1~46.0/50.00	50.00	50.00	50.00	50.00	50.00	50.00	50.00	44.01 (50.57)				
		6.1~26.3/100.00	100.00	100.00	100.00	87.51	71.92	60.25	51.21	43.66 (50.29)				
45m		5.6~45.3/50.00	50.00	50.00	50.00	50.00	50.00	50.00	50.00					
		5.6~27.0/100.00	100.00	100.00	100.00	88.68	72.98	61.23	52.00 (45.05)					
40m		5.2~40.8/50.00	50.00	50.00	50.00	50.00	50.00	50.00						
		5.2~27.8/100.00	100.00	100.00	100.00	90.86	74.66	61.21 (40.55)						
35m		4.8~35.6/50.00	50.00	50.00	50.00	50.00	50.00	50.00						
		4.8~27.8/100.00	100.00	100.00	100.00	91.54	74.02 (35.32)							



LH2200-100 Luffing Jib Tow Crane

LH2200-100

Mechanisms

 Hoisting	Configuration								
			III	IV	V	III	IV	V	
 Slewing	A4VG180EP4DM1/32 L-NSD02F00XBP	m/min	0~32	0~52	0~110	0~16	0~26	0~55	780m Φ (7layers)
		t	100	42	20	50	21	10	
 Luffing	A4VG90EP4DM1/32 L-NSF02F023BP	r/min	0~0.7						 Consult us if overtop
		m/min	2 min(15°~85°)						
Engine	C18	522KW							

