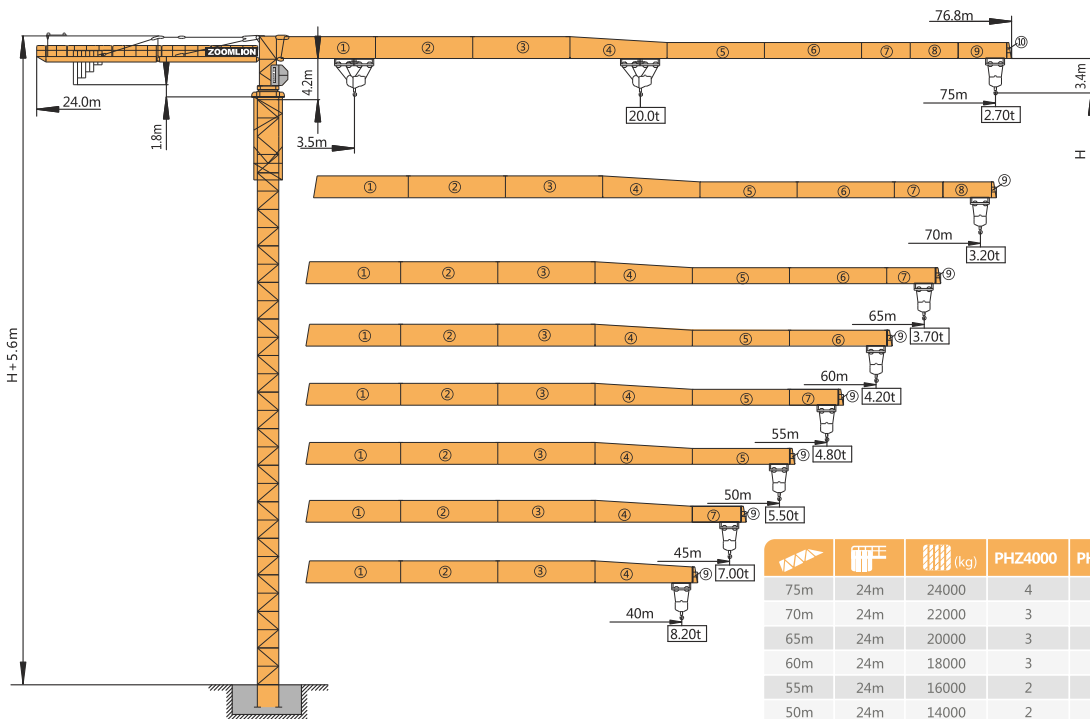




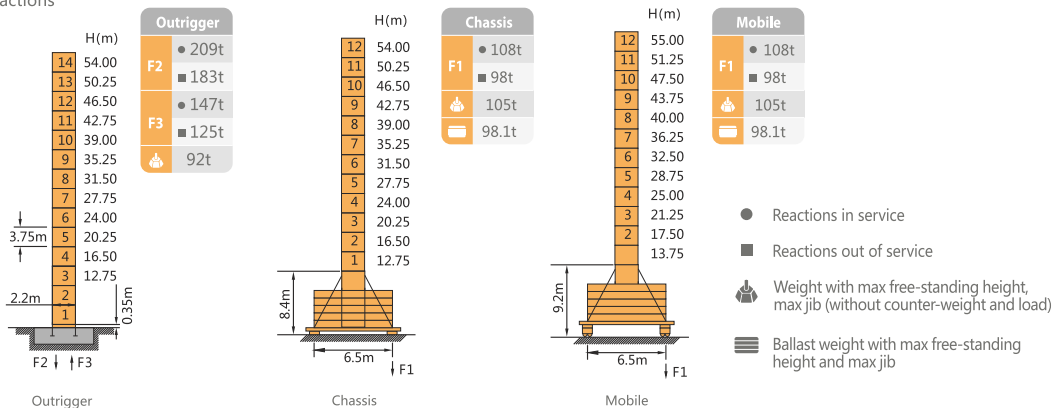
TCT7527-20 Topless Tower Crane



		 (kg)	PHZ4000	PHZ3000	PHZ2000
75m	24m	24000	4	2	1
70m	24m	22000	3	2	2
65m	24m	20000	3	2	1
60m	24m	18000	3	2	0
55m	24m	16000	2	2	1
50m	24m	14000	2	2	0
45m	24m	12000	1	2	1
40m	24m	11000	2	1	0

TCT7527-20

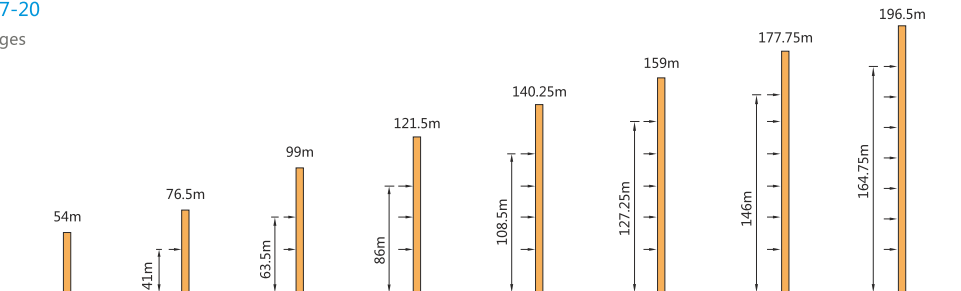
Masts / Reactions



250t-m

TCT7527-20


Anchorage



TCT7527-20 Topless Tower Crane

TCT7527-20

Load Diagrams

 R(m)		Max Capacity m/t	20.0	25.0	30.0	35.0	38.0	40.0	45.0	50.0	53.0	55.0	60.0	65.0	70.0	75.0
75m (R=76.5)	⌋	3.5~26.9/10.00	10.00		8.80	7.33	6.63	6.23	5.38	4.70	4.36	4.16	3.70	3.31	2.98	2.70
	⌋⌋	3.5~14.2/20.00	13.16	9.96	7.87	6.39	5.69	5.29	4.44	3.77	3.43	3.22	2.76	2.38	2.05	1.76
70m (R=71.5)	⌋	3.5~28.1/10.00	10.00		9.26	7.73	7.01	6.59	5.70	5.00	4.64	4.42	3.95	3.54	3.20	
	⌋⌋	3.5~14.6/20.00	13.79	10.49	8.33	6.79	6.07	5.65	4.76	4.06	3.70	3.48	3.01	2.61	2.26	
65m (R=66.5)	⌋	3.5~29.0/10.00	10.00		9.60	8.02	7.28	6.84	5.93	5.20	4.83	4.61	4.12	3.70		
	⌋⌋	3.5~15.1/20.00	14.31	10.90	8.67	7.08	6.34	5.90	4.99	4.26	3.89	3.67	3.18	2.76		
60m (R=61.5)	⌋	3.5~29.4/10.00	10.00		9.78	8.17	7.41	6.97	6.04	5.30	4.93	4.70	4.20			
	⌋⌋	3.5~15.3/20.00	14.57	11.11	8.84	7.23	6.47	6.03	5.10	4.36	3.99	3.76	3.26			
55m (R=56.5)	⌋	3.5~29.9/10.00	10.00		9.96	8.32	7.55	7.10	6.16	5.41	5.03	4.80				
	⌋⌋	3.5~15.5/20.00	14.85	11.33	9.02	7.38	6.62	6.16	5.22	4.47	4.09	3.86				
50m (R=51.5)	⌋	3.5~30.3/10.00	10.00			8.45	7.67	7.22	6.26	5.50						
	⌋⌋	3.5~15.7/20.00	15.07	11.51	9.17	7.51	6.73	6.28	5.32	4.56						
45m (R=46.5)	⌋	3.5~33.2/10.00	10.00			9.40	8.55	8.05	7.00							
	⌋⌋	3.5~17.2/20.00	16.77	12.86	10.29	8.47	7.61	7.11	6.06							
40m (R=41.5)	⌋	3.5~33.7/10.00	10.00			9.58	8.71	8.20								
	⌋⌋	3.5~17.5/20.00	17.08	13.10	10.49	8.64	7.77	7.26								

TCT7527-20

Mechanisms

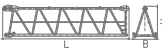
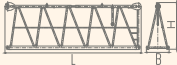


	Configuration								kW	
			III	IV	V	III	IV	V		
 Hoisting	QP20100C	m/min	40	80	100	20	40	50	75	620mⓈ(5 layers)
		t	10	5	3	20	10	6		
 Slewing	HPW75.130	r/min	0~0.6						3×7.5	 Consult us if overtop
 Trolleying	BP110A	m/min	0~100						11	
 Travelling	ZAH52A-D×2 ZDH52A-D×2	m/min	0~25						4×5.2	
	380V(±10%)50Hz		108.5+4×5.2 (kW)							

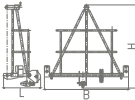
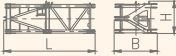
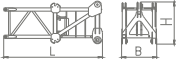
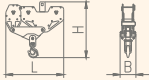

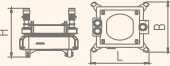
250t-m

TCT7527-20 Topless Tower Crane

TCT7527-20

Packing List

NO	Description	Sketch	L(m)	B(m)	H(m)	Weight Per piece(t)	Qty
1	Jib I		10.50	1.98	2.66	4.94	1
2	Jib II		10.40	1.73	2.55	3.79	1
3	Jib III		10.40	1.73	2.55	2.92	1
4	Jib V		10.30	1.73	1.85	1.81	1
5	Jib VI		10.30	1.73	1.78	1.22	1
6	Jib IV			10.30	1.73	2.50	2.19
7	Jib VII		5.20	1.73	1.85	0.57	1
8	Jib VIII		5.20	1.73	1.80	0.51	2

NO	Description	Sketch	L(m)	B(m)	H(m)	Weight Per piece(t)	Qty
9	Jib X		0.90	1.98	2.00	0.16	1
10	Tower head		5.24	2.47	2.05	5.30	1
11	Slewing mast		5.25	2.04	2.50	5.15	1
12	Hook		1.90	0.29	2.38	0.84	1
13	Climbing frame		9.71	2.90	3.02	7.95	1
14	Slewing assembly		2.79	2.79	2.71	7.26	1

NO	Description	Sketch	L(m)	B(m)	H(m)	Weight Per piece(t)	Qty
15	Trolley		4.20	2.02	1.12	1.08	1
16	The front section of counter-jib		10.55	1.77	0.83	3.44	1
17	The back section of counter-jib		1.70	2.27	1.85	8.31	1
18	Cabin		2.00	1.30	2.20	0.50	1
19	Base tower section		4.02	2.30	2.20	2.46	1

NO	Description	Sketch	L(m)	B(m)	H(m)	Weight Per piece(t)	Qty
20	Sheet section (4 piece)		4.15	2.25	0.70	2.44	13
21	Long cross beam (only chassis and mobile)		9.28	1.14	1.39	2.58	1
22	Short cross beam (only chassis and mobile)		4.69	0.74	1.36	1.27	2
23	Driving Dolly		1.36	1.20	0.83	0.86	4
24	Cable Reel		0.85	2.20	2.20	0.75	1

250t-m