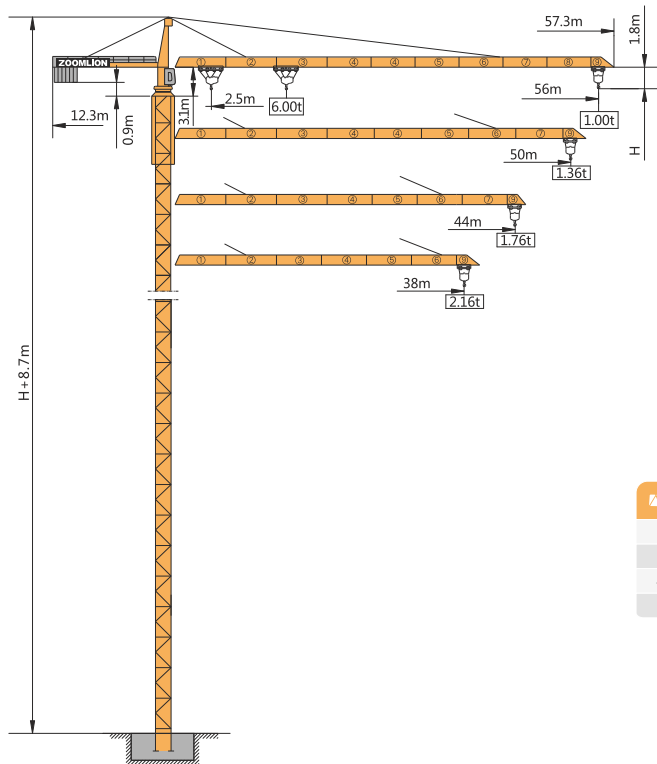




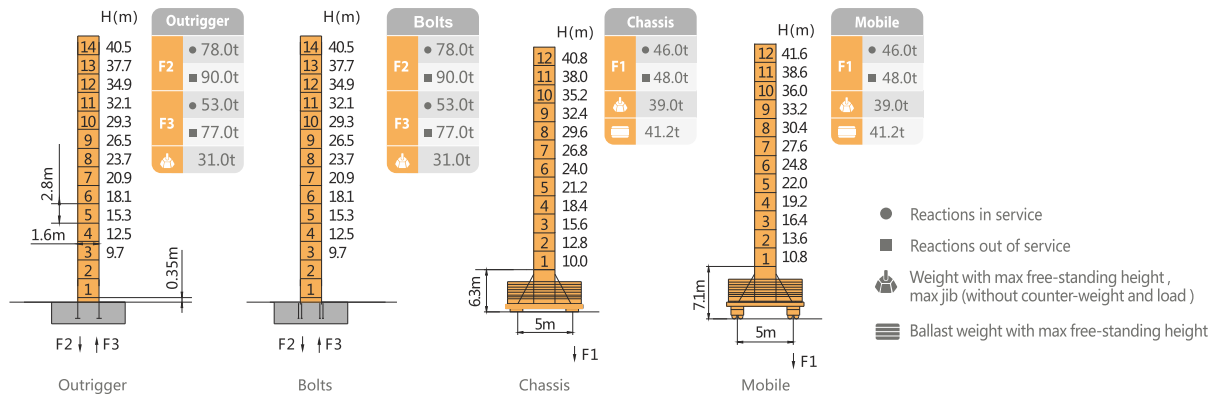
# TC5610-6 Hammer-head Tower Crane



		 (kg)	PHZ2900	PHZ1500
56m	12.3m	14600	4	2
50m	12.3m	13100	4	1
44m	12.3m	11600	4	0
38m	12.3m	10200	3	1

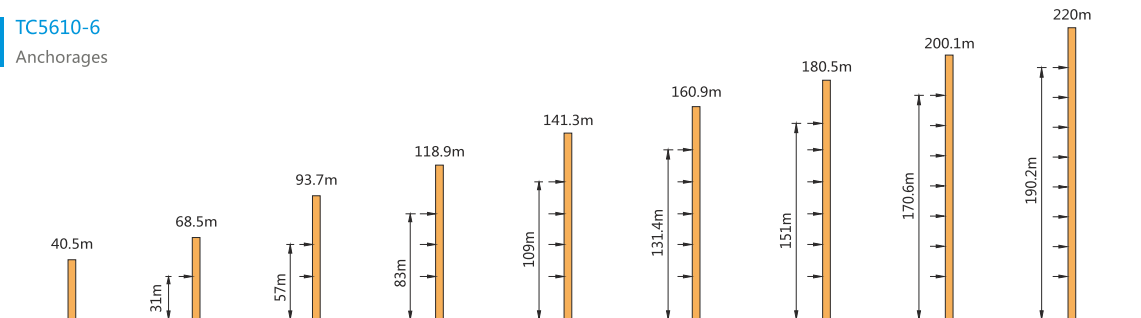
## TC5610-6

Masts / Reactions



## TC5610-6

Anchorage



# TC5610-6 Hammer-head Tower Crane

## TC5610-6

### Load Diagrams

 R(m)		Max Capacity m/t	17.0	20.0	23.0	26.0	29.0	32.0	35.0	38.0	41.0	44.0	47.0	50.0	53.0	56.0	
56m (R=57.3)		2.5~24.9/3.00	3.00			2.85	2.49	2.20	1.96	1.75	1.58	1.43	1.30	1.19	1.09	1.00	
		2.5~13.7/6.00	4.68	3.85	3.25	2.79	2.43	2.14	1.90	1.69	1.52	1.37	1.24	1.13	1.03	0.94	
50m (R=51.3)		2.5~27.3/3.00	3.00				2.79	2.47	2.20	1.98	1.79	1.63	1.48	1.36			
		2.5~15.0/6.00	5.19	4.29	3.63	3.12	2.73	2.41	2.14	1.92	1.73	1.57	1.42	1.30			
44m (R=45.3)		2.5~28.9/3.00	3.00				2.99	2.65	2.37	2.13	1.93	1.76					
		2.5~15.9/6.00	5.55	4.59	3.89	3.35	2.93	2.59	2.31	2.06	1.87	1.70					
38m (R=39.3)		2.5~29.2/3.00	3.00					2.68	2.40	2.16							
		2.5~16.0/6.00	5.61	4.64	3.93	3.39	2.97	2.62	2.34	2.10							

## TC5610-6

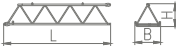

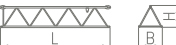

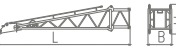
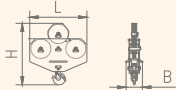
## Mechanisms

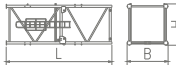

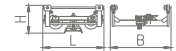

 Hoisting	Configuration								kW	
			I	II	III	I	II	III		
 Hoisting	<b>QS680D</b>	m/min	8.88	40	80	4.44	20	40	5.4/24/24	440m <sup>①</sup> (6 layers)
		t	3	3	1.5	6	6	3		
 Slewing	<b>HR75.130</b>	r/min	0~0.65						7.5	 Consult us if overtop
 Trolleying	<b>BE33E</b>	m/min	50/25						3.3/2.2	
 Travelling	<b>ZA52-D×2</b> <b>B52-D×2</b>	m/min	0~25						2×5.2	
	<b>380V(±10%)50Hz</b>		34.8+2×5.2 ( kW )							

# TC5610-6 Hammer-head Tower Crane

## TC5610-6

### Packing List

NO	Description	Sketch	L(m)	B(m)	H(m)	Weight Per piece(t)	Qty
1	Jib G1		6.17	1.52	1.30	0.57	1
2	Jib G2		6.17	1.32	1.22	0.91	1
3	Jib G3		6.17	1.32	1.22	0.49	1
4	Jib G4		6.17	1.32	1.22	0.47	2
5	Jib G5		6.17	1.32	1.22	0.37	1
6	Jib G6		6.17	1.32	1.22	0.43	1
7	Jib G7		6.17	1.32	1.22	0.32	1
8	Jib G8	6.17	1.32	1.22	0.29	1	
9	Jib G9		2.58	1.52	1.23	0.18	1
10	Tower head		9.08	1.28	1.26	2.20	1
11	Hook		1.02	0.31	1.13	0.23	1

NO	Description	Sketch	L(m)	B(m)	H(m)	Weight Per piece(t)	Qty
12	Climbing Equipment		6.05	2.35	2.25	3.43	1
13	Slewing Assembly		2.11	2.09	2.26	2.77	1
14	Trolleying Mechanism		1.46	1.58	0.94	0.29	1
15	Rear-Counter Jib		6.08	1.46	1.28	2.38	1

NO	Description	Sketch	L(m)	B(m)	H(m)	Weight Per piece(t)	Qty
16	Front-Counter Jib		5.64	1.33	0.57	0.70	1
17	Cabin		1.86	1.25	2.17	0.50	1
18	Base Section		2.80	1.80	1.75	0.88	1
	Tower Section		2.80	1.80	1.75	0.80	13
19	Whole Beam		7.53	1.00	0.85	1.30	1
20	Semi Beam		3.63	0.52	0.83	0.62	2
21	Driving Dolly		1.25	1.35	0.90	0.82	2

NO	Description	Sketch	L(m)	B(m)	H(m)	Weight Per piece(t)	Qty
22	Driven Dolly		1.25	0.60	0.90	0.68	2
23	Cable Reel		0.85	2.20	2.20	0.75	1